



Microsoft Dynamics GP 2013  
**What's New**

**Copyright**

Copyright © 2014 Microsoft. All rights reserved.

**Limitation of liability**

This document is provided "as-is." Information and views expressed in this document, including URL and other Internet Web site references, may change without notice. You bear the risk of using it.

Some examples depicted herein are provided for illustration only and are fictitious. No real association or connection is intended or should be inferred.

**Intellectual property**

This document does not provide you with any legal rights to any intellectual property in any Microsoft product.

You may copy and use this document for your internal, reference purposes.

**Trademarks**

Microsoft, Microsoft Dynamics, Excel, Outlook, SharePoint, and SQL Server are trademarks of the Microsoft group of companies. FairCom and c-tree Plus are trademarks of FairCom Corporation and are registered in the United States and other countries.

All other trademarks are property of their respective owners.

**Warranty disclaimer**

Microsoft Corporation disclaims any warranty regarding the sample code contained in this documentation, including the warranties of merchantability and fitness for a particular purpose.

**License agreement**

Use of this product is covered by a license agreement provided with the software product. If you have any questions, please call the Microsoft Dynamics GP Customer Assistance Department at 800-456-0025 (in the U.S. or Canada) or +1-701-281-6500.

**Publication date**

May 2014

# Contents

<b>Introduction</b> .....	<b>1</b>
<b>Chapter 1: Foundation enhancements</b> .....	<b>3</b>
Companies offline .....	3
Document attachments .....	3
Email functionality .....	4
Home Page .....	5
Desktop action pane .....	6
Installation and deployment features .....	6
Lookups .....	7
Microsoft Azure storage .....	7
Note window .....	8
Reporting .....	8
Security .....	10
SmartList .....	10
SmartList Designer .....	11
User record .....	11
Word templates .....	11
Workflow .....	12
Integration Manager .....	13
Payment Services for Microsoft Dynamics .....	13
<b>Chapter 2: Financial enhancements</b> .....	<b>15</b>
General Ledger .....	15
Payables Management .....	16
Receivables Management .....	18
Bank Reconciliation .....	19
Multicurrency Management .....	19
Analytical Accounting .....	19
Electronic Banking .....	21
Fixed Assets Management .....	21
Encumbrance Management .....	23
<b>Chapter 3: Distribution enhancements</b> .....	<b>25</b>
Inventory Control .....	25
Purchase Order Processing .....	27
Sales Order Processing .....	28
<b>Chapter 4: Human Resources and Payroll enhancements</b> .....	<b>31</b>
Human Resources .....	31
U.S. Payroll .....	31
Human Resources and Payroll Suite .....	33
Advanced Human Resources .....	33
U.S. Payroll Extensions .....	33
PTO Manager .....	34

<b>Chapter 5: Field Service Series enhancements .....</b>	<b>37</b>
Service Call Management .....	37
Contract Administration.....	38
Returns Management .....	39
<b>Chapter 6: Project Accounting enhancements .....</b>	<b>41</b>
Project timesheet .....	41

# Introduction

What's New is your guide to enhancements in Microsoft Dynamics GP 2013.

We add enhancements based on feedback we receive from customers, as well as on market research. Your willingness to help us build better products makes this a more complete solution for small and medium-sized businesses, putting you in a better position to manage your organization successfully. We encourage you to share your thoughts and reactions with us at any time.

Some enhancements described in this documentation are optional and can be purchased through your Microsoft Dynamics GP partner. If you currently have a license for one of these modules and have an active enhancement program, you automatically will receive the enhancements contained in that module.

This document describes enhancements that were added to Microsoft Dynamics GP since Microsoft Dynamics GP 2013 R2.

Descriptions of the enhancements are divided into the following chapters:

[Chapter 1, "Foundation enhancements,"](#) describes enhancements to the Microsoft Dynamics GP system.

[Chapter 2, "Financial enhancements,"](#) describes enhancements to General Ledger, Payables Management, Receivables Management, Encumbrance Management, Multicurrency Management, Analytical Accounting, Fixed Assets Management, and Electronic Banking.

[Chapter 3, "Distribution enhancements,"](#) describes enhancements to Inventory Control, Sales Order Processing, and Purchase Order Processing.

[Chapter 4, "Human Resources and Payroll enhancements,"](#) describes enhancements to Human Resources and Payroll.

[Chapter 5, "Field Service Series enhancements,"](#) describes enhancements to the Field Service Series, which includes Service Call Management, Contract Administration, and Returns Management.

[Chapter 6, "Project Accounting enhancements,"](#) describes enhancements to Project Accounting.



# Chapter 1: Foundation enhancements

This part of the documentation describes enhancements to the Microsoft Dynamics GP system, and Integration Manager. The following topics are discussed:

- [Companies offline](#)
- [Document attachments](#)
- [Email functionality](#)
- [Home Page](#)
- [Desktop action pane](#)
- [Installation and deployment features](#)
- [Lookups](#)
- [Microsoft Azure storage](#)
- [Note window](#)
- [Reporting](#)
- [Security](#)
- [SmartList](#)
- [SmartList Designer](#)
- [User record](#)
- [Word templates](#)
- [Workflow](#)
- [Integration Manager](#)
- [Payment Services for Microsoft Dynamics](#)

## Companies offline

You can take one or more companies offline for maintenance or administrative tasks, such as a year-end close or an update. You can use the Take Company Offline for Maintenance window to select the companies that you want to take offline. You also can send a default or custom message to the users who attempt to log in to a company while it's offline.

When a company has been taken offline, the current users can continue working in the company. Once those users log out of the company, they will not be able to log back in to the company unless they have been given offline access.

You can use the Send Message window to send messages to Microsoft Dynamics GP users. You can select the users and type of message you would like to send. For example, you can send a task with reminder message of an upcoming event to all users or a "please log out of Microsoft Dynamics GP" notification message to users currently logged into a company that has been taken offline. (Added in Microsoft Dynamics GP 2013 R2.)

## Document attachments

By using the document attachment functionality in Microsoft Dynamics GP, you attach documents such as requisitions, credit reports and images to master records, transactions, and the individual line items assigned to the transactions. You also can view a document that has already been attached or remove an attachment.

You can attach documents to the following master records.

Master records	
Item record	Vendor record
Customer record	

You can attach documents to the following transactions and the line items assigned to the transactions.

<b>Transactions</b>	
Sales quote	Drop-ship blanket purchase order
Sales order	In-transit transfer receipt
Sales fulfillment order	Purchasing return
Sales invoice	Purchasing return/credit
Sales return	Purchasing inventory
Sales back order	Purchasing inventory w/Credit
Standard purchase order	Payables invoice
Blanket purchase order	Payables finance charge
Drop-ship purchase order	Payables return
Shipment receipt	Payables miscellaneous charge
Shipment/Invoice receipt	Payables credit memo
Purchasing Invoice receipt	

You have the option to delete attachments from master records and transactions in the Document Attachment Management window. You also can require a password to be entered when attempting to delete an attachment from a master record or transaction. (Added in Microsoft Dynamics GP 2013 Service Pack 2.)

You can enter or select attributes for attachments such as allowing the attachment to be sent in email or allowing the attachment to flow or link from the master record to the transaction or document.(Added in Microsoft Dynamics GP 2013 Service Pack 2.)

By using the email functionality for documents in Microsoft Dynamics GP and allowing attachments to be sent in email, you can select attachments to send in email when you send the purchase order or sales document in email. (Added in Microsoft Dynamics GP 2013 Service Pack 2.)

If you are using a Windows Image Acquisition (WIA) scanner, you can choose the Scan button in the Document Attachment Management window to add an attachment. You can select the scanner and the document is saved in a Joint Photographic Experts Group (JPEG) format. (Added in Microsoft Dynamics GP 2013 R2.)

In Microsoft Dynamics GP 2013 Service R2, you can use document attachments for Payables Management transactions.

## **Email functionality**

### **Sending documents in email messages**

If you are using Sales Order Processing, you can send sales back order and packing slip documents in an email message.

If you are using Receivables Management, you can send customer statements in an email message.



## Sales Order Processing Transaction lists

You can send a packing slip in an email after selecting the document and choosing Send Packing Slip in the Adv. Distribution group. This change applies to all transaction lists that include Sales Order Processing transactions.

## Server type for email

You can select MAPI or Exchange as the server type for email in the System Preferences window. If you select Exchange, you must be using Exchange 2007 Service Pack 1 or greater with Exchange Web Services. The Autodiscover service must be enabled to connect to the Exchange server.

You can use MAPI or Exchange as the server type for email in the Microsoft Dynamics GP desktop client. You can only use Exchange as the server type for email in the Microsoft Dynamics GP Web Client.

The email functionality is supported on the 64-bit edition of Microsoft Office 2010, if you are using Exchange 2007 Service Pack 1 or greater with Exchange Web Services and Exchange is your server type in the System Preferences window.

## Password protection for Word documents

You can send Word documents in email with password protection. With the Protect .docx attachments with a password option marked in the System Preferences window, a password must be entered before the recipient of the document can edit the document. You can select to automatically generate the password for the documents or assign a password yourself.

## Specific email addresses for document types

You can assign specific email addresses to document types for customers and vendors. For example, you might want to send quotes to one email address and invoices to a different email address. (Added in Microsoft Dynamics GP 2013 R2.)

## Sending reports in e-mail messages

When sending a report in email, you can send the documents as a DOCX or HTML file format. Before you can send documents as DOCX attachments, the Word template for the document must be enabled in the Template Configuration Manager window. If you mark to embed reports in the message body, the reports will be sent in HTML format. (Added in Microsoft Dynamics GP 2013 R2.)

## Print remaining documents

If you have marked to print and send your sales or purchase order documents in email at the same time, the documents that can be sent in email will be sent in email while the documents that cannot be sent in email will be printed. When you print your customer statements, you can print statements that are not sent in email. (Added in Microsoft Dynamics GP 2013 R2.)

## Home Page

The following updates were made to the Home Page.

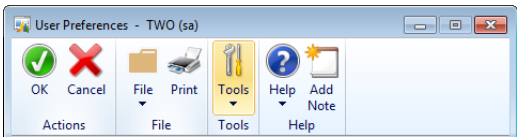
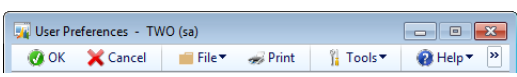
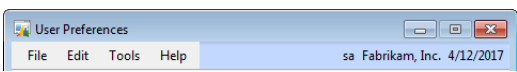
- The Microsoft Office Outlook area has been removed.
- The Metrics area was replaced by the Business Analyzer area. For the Business Analyzer area on your home page to be available, Microsoft SQL Server 2008

Reporting Services or later must be installed and set up to use with Microsoft Dynamics GP.

- You can maximize and minimize area pages in your home page.
- You can move area pages within your home page.
- You can use the Customize Home Page window to select the number of columns to display and the location of the columns in your home page.
- You can use the Customize Area Page window to select which area pages are displayed in your home page. For example, the Sales area pages provide access to windows used to maintain customer records, enter sales transactions, and print customer statements and more. If you don't want to see the Reports area page for Sales, you can use Customize Area Page window to unmark Reports.
- Self Service is a new home page role. You can select this role if you only need to view summary information, quick navigation to common tasks, and viewing the most recent activity for Procurement or Time Management. (Added in Microsoft Dynamics GP 2013 R2.)
- Procurement and Time Management are content areas in the Customize Home Page window that you can display on your home page. The new areas will contain the necessary information and navigation for users that only use Microsoft Dynamics GP for a specific task like entering timecards or purchase requisitions. (Added in Microsoft Dynamics GP 2013 R2.)

## Desktop action pane

In the User Preferences window, you can select how to display commands in Microsoft Dynamics GP windows. The action pane can make the window commands more visible. The display is enabled automatically and customizable by user. Refer to the following table to view how commands can be displayed in a window. (Added in Microsoft Dynamics GP 2013 R2.)

Window Command Display selections	
Action Pane	
Action Pane Strip	
Menu Bar	

## Installation and deployment features

### Naming system databases

You can use DYNAMICS as the system database name or enter a different name. If you use a different name for the system database, you can deploy more than one instance of Microsoft Dynamics GP to a single instance of Microsoft SQL Server.

## Naming the sample company database

When creating the sample company using Microsoft Dynamics GP Utilities, you use TWO as the sample company database name or enter a different name for the sample company database. You can only create LessonUser1 and LessonUser2 as sample users for the TWO sample company database using the Microsoft Dynamics GP Utilities.

If the sample company database has a name other than TWO, you must use the User Setup window to create lesson users for the sample company and then use the User Access Setup window to set up user access to the sample company.

## Report deployment

If you have selected Native as the report server mode, you can enter the name of the folder to deploy the reports to. By using a folder, you can deploy Reporting Services reports for multiple Microsoft Dynamics GP instances to a single Microsoft SQL Server Reporting Server. The default folder name is the name of the system database. If DYNAMICS is the system database name, the Folder Name field is blank. After deploying reports to the folder, you must provide access to the folder.

## Analytical Accounting

Analytical Accounting is now a subfeature of Fixed Asset Management. If you select to install Analytical Accounting but not Fixed Asset Management, Fixed Asset Management is automatically installed because Analytical Accounting integrates with Fixed Asset Management.

## Web Client SQL Server login

You can use the Microsoft Dynamics GP Utilities to create or modify a SQL Server login for Microsoft Dynamics GP Web Client. The Web Client SQL Server login is used for the connection to the SQL Server when a Microsoft Dynamics GP user has been configured with a Windows login. In this scenario, the web client user can access the web client by providing only their Windows login credentials instead of using their own SQL Server login. (Added in Microsoft Dynamics GP 2013 R2.)

## Lookups

The sort order is saved when you save a default lookup view for your master records. You can save the sort order for the following lookup windows.

- Items lookup window
- Employees lookup window
- Customers and Prospects lookup window
- Salespeople lookup window
- Vendors lookup window

The sort order is saved on a per user, per company basis.

## Microsoft Azure storage

The Back Up Company window and the Restore Company window now provide the additional option of backing up and restoring your data from Microsoft Azure storage, in addition to using your local hard drive or network location. By using Microsoft Azure storage, you can back up your mission critical data to Microsoft data centers that provide secure and reliable offsite storage. Storage in the Microsoft

data centers provides you the ability to easily get back up and running in situations where a local or network backup may no longer be available. Before you can use Microsoft Azure storage, you must create a storage account and a container. To use Microsoft Azure storage, you must be using SQL Server 2012 Service Pack 1 Cumulative Update 2 or later. For more information, see Microsoft Azure documentation. (Added in Microsoft Dynamics GP 2013 R2.)

## Note window

You can use the Document Attachment Management window to attach documents to record level notes instead of OLE objects. By using the Document Attachment Management functionality, the documents attached to the notes will be stored directly in the Microsoft SQL Server database. Since the files are now stored in the SQL Server database, the data is stored and backed up along with the rest of the Microsoft Dynamics GP data. (Added in Microsoft Dynamics GP 2013 R2.)

You can use the OLE Notes Migration Utility to migrate the documents already attached to notes from OLE objects to the new document attachment functionality. For more information refer to Microsoft Dynamics [CustomerSource](#) or [PartnerSource](#). (Added in Microsoft Dynamics GP 2013 R2.)

## Reporting

### Select a printer when printing

You can select which printer to send a report to at the time you are printing the report. After marking the Print option and choosing OK in the Report Destination window, the Windows Print dialog box appears. You can select a different printer for the report in the dialog box. If you are printing a form, such as a check or a purchase order, horizontal and vertical alignment options will be available in the dialog box. The printer you select in the dialog box does not replace the default printer set up in the Print Setup window. Previously, you had to switch to the printer you wanted to use before you print the report.

### Print reports from maintenance windows

You can use the Report Assignments window to assign the SQL Server Reporting Services reports you want to print from a specific maintenance window. If you have deployed Reporting Services reports, you can print Reporting Services reports from the following windows.

Account Maintenance	Checkbook Maintenance
Customer Maintenance	Salesperson Maintenance
Sales Prospect Maintenance	Vendor Maintenance
Employee Maintenance	Applicant Maintenance
Item Maintenance	

After assigning reports, you can use the Printer icon drop-down list to select a report you want to print from a list of reports. If you chose the Printer icon in the window, the default report assigned to the window is printed. The default report is the first report listed in the Selected Reports column in the Report Assignment window.

### Print reports from transaction windows

You can use the Report Assignments window to assign the SQL Server Reporting Services reports you want to print from a specific transaction window. If you have

deployed Reporting Services reports, you can print Reporting Services reports from the following windows.

<b>Sales</b>	
Sales Transaction Entry	Order Fulfillment
Receivables Transaction Entry	
<b>Purchasing</b>	
Purchase Order Entry	Enter/Match Invoices
Receivings Transaction Entry	Payables Transaction Entry
Purchase Requisition Entry	
<b>Financial</b>	
Transaction Entry	Clearing Entry
Budget Transaction Entry	Quick Journal Entry
<b>Inventory</b>	
Item Transaction Entry	Item Transfer Entry
Assembly Entry	Stock Count Entry
In-Transit Transfer Entry	
<b>U.S. Payroll</b>	
Payroll Transaction Entry	
<b>Field Service</b>	
Service Call Entry/Update	Contract Entry/Update
RMA Entry/Update	RTV Entry/Update
Work Order Entry/Update	In-Transit Transfer Entry
<b>Project Accounting</b>	
Purchase Order Entry	Receivings Transaction Entry
Receivables Transaction Entry	Timesheet Entry
Employee Expense Entry	Equipment Log Entry
Miscellaneous Log Entry	Inventory Transfer Entry
Returns from Project Entry	Revenue Recognition Entry
Billing Entry	Revenue Recognition Batch Entry
Billing Batch Entry	
<b>Manufacturing</b>	
Manufacturing Order Entry	Quick MOs
Picklist	Manufacturing Component Transaction Entry
BOM Routing Link	Manufacturing Order Receipt Entry
Data Collection	MRP Exclusion List
Sales Forecasting	Master Production Scheduling
QA Incoming	Non-Standard Report (NSR)-QA Incoming
Sales Configurator	Supplier Corrective Action Request (SCAR)

After assigning reports, you can use the Printer icon drop-down list to select a report you want to print from a list of reports. If you chose the Printer icon in the window, the default report assigned to the window is printed. The default report is the first report listed in the Selected Reports column in the Report Assignment window. (Added in Microsoft Dynamics GP 2013 R2.)

## Security

### Alternate/Modified Forms and Reports window

You can display only the forms or reports that are assigned to the ID, Product, Type and Series by marking the Display Selected option. You can't make changes when this options is selected.

You can restore the selections to the settings from the original Microsoft Dynamics GP installation or change access to all forms or reports for a product. The option displayed will depend on the selection you've made in the Product list.

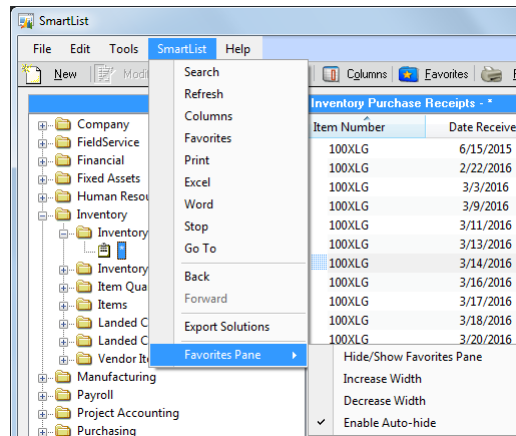
You can select the series that contains the form or report you want to grant access to. This will narrow down the list of windows or reports in the list.

You can use the Show/Hide button to expand the Alternate/Modified Forms and Reports List to grant access to individual forms or reports.

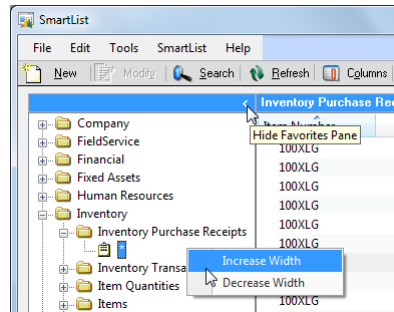
## SmartList

### SmartList window changes

A new submenu has been added to the SmartList menu. From the Favorites Pane submenu, you can hide or show the Favorites Pane, increase or decrease the size of the Favorites Pane, and choose to automatically hide the Favorite Pane after selecting a SmartList favorite. (Added in Microsoft Dynamics GP 2013 Service Pack 2.)



You can right-click in the Favorites Pane and select to increase or decrease the size of the Favorites pane. You also choose a button to hide or show the Favorites Pane. (Added in Microsoft Dynamics GP 2013 Service Pack 2.)



## SmartList Designer

You can open the SmartList Designer from the SmartList window. You can use SmartList Designer to create a new SmartList or to create a new SmartList based on an existing Smartlist. After creating SmartLists, you can modify or delete them by using the SmartList Designer.

Use the SmartList Designer for the following tasks.

- Explore database tables and views
- Add or remove the fields from the SmartList
- Create and modify calculated fields
- Select a format for a currency field
- Specify relationships between tables
- Specify filters to restrict data
- Preview your results
- Create Go To menu options (Added in Microsoft Dynamics GP 2013 R2.)

After saving the new SmartList, a new folder and SmartList favorite are created in the SmartList window. You can use the SmartList window to view, print, or modify the new SmartLists. You also can send the SmartList results to Microsoft Excel or Microsoft Word. (Added in Microsoft Dynamics GP 2013 Service Pack 2.)

## User record

If you have users that will only access the Microsoft Dynamics GP Web Client and will never use the desktop client, you can set up these users in Microsoft Dynamics GP as web client only users. In the User Setup window, mark the Web Client user only (no SQL Server Account) option. In the Windows Account tab, enter the Windows login information for the user. (Added in Microsoft Dynamics GP 2013 R2.)

## Word templates

If you are using Sales Order Processing, the following new predefined Word templates installed with Microsoft Dynamics GP.

Document type	Report Writer report name	Default Word template name
Sales Order Processing Back Order	SOP Blank History Options Back Order	SOP Blank History Options Back Order Template*
	SOP Blank History Back Order	SOP Blank History Back Order Template*
	SOP Blank Options Back Order	SOP Blank Options Back Order Template*
	SOP Blank Back Order	SOP Blank Back Order Template*
Sales Order Processing Picking Ticket	SOP Blank Picking Ticket Bin Sequenced	SOP Blank Picking Ticket Bin Sequenced Template*
	SOP Blank Picking Ticket Order Entered	SOP Blank Picking Ticket Order Entered Template*
	SOP Blank Options Picking Ticket Form	SOP Blank Options Picking Ticket Form Template*

## Workflow

Workflow in Microsoft Dynamics GP allows you to create individual *workflows*, or approval processes. Each workflow defines how a document “flows” through the system by showing who must approve it, and the conditions under which they must approve it. You also can use workflow to create steps for manual tasks. For example, you can set up a checklist of tasks for a document.

### Types of workflows

By default, there are several types of workflows you can create:

- Purchase order approval
- Purchase requisition approval
- Project timesheets approval
- Payroll timecard approval

These workflow types allow you to create workflow processes around each of the respective document types, requiring the workflow to be completed before document processes can be performed.

### Workflow User Delegation

Users can have task assignments with a due date and time by which the task must be completed. You can delegate task assignments to another user on a task-by-task basis.

If a user will be out of the office for an extended period of time, you can automatically set up delegations. Task assignments can be delegated for all workflow types, or different delegates can be defined for tasks for each workflow type.

### Workflow Calendar

Each step in a workflow can be given a time limit which calculates a due date and time by which the task must be completed. The Workflow Calendar window allows you to define standard working hours for the company and holidays. This calendar can then be used in calculating the due date and time of a task so non-working days or time does not count against the time limit to complete the task.



For example, if a task with a time limit of 8 hours is assigned at 4:00 P.M. on a Friday, and the company's working hours are Monday through Friday, 8:00 A.M. to 5:00 P.M., then the due date and time for the task is set to 3:00 P.M. the following Monday.

### **Workflow Email Notifications**

There are two types of email notifications: Workflow assignment notifications and Workflow action completed notifications.

With Workflow assignment notifications, users can receive an email notifying them that a workflow action has been assigned to them for a document. This email contains information about the document, including information from the document workflow. The user is also able to perform Workflow actions against the document by clicking a link in the email to open a Web page that allows the user to enter comments, and complete the action.

With Workflow action completed notifications, the workflow can be configured to send notifications to the originator and other users when actions are taken against a document. These are set up for a workflow in the Workflow Email Notification Maintenance window.

Email templates are configured in the Message Setup window. This window has been modified to include Workflow fields, as well as allow line item information to be included in the message

### **Viewing Workflow history**

You can use the Workflow History window to view and track the workflow of a document, providing an audit trail for the document. The workflow history includes all actions that have been taken for the workflow, any action that is pending, and any comments associated with the action.

Refer to the System Setup Guide for more information. (Added in Microsoft Dynamics GP 2013 R2.)

## **Integration Manager**

If you do not have a default Integration Manager database when starting Integration Manager, the Select Database window opens. Use this window to select the database you want to open. You also can mark the Set as default database option.

## **Payment Services for Microsoft Dynamics**

### **Address Verification Service for Payment Services**

Address verification is implemented in Payment Services providing an authorization process that validates the card holder billing address information with the merchant bank's record for the card holder to ensure the card is in the hands of the rightful owner. If the result of the verification is not accepted, the credit card transaction will be voided.

In addition, in Microsoft Dynamics GP, it is the numeric ISO code that is used to identify the country, rather than the entry in the Country Code field. Because various entries may have been made to identify a country - such as US or USA to identify the United States, the one standard number assigned by the ISO is used to verify the country. For a new installation, those ISO codes and the ISO country code will be included when you install the system. For an upgrade from a previous release, the ISO codes will not be implemented, as the system cannot associate the country code with the correct country.

## Chapter 2: Financial enhancements

This part of the documentation describes enhancements to Microsoft Dynamics GP financial modules.

The following information is discussed:

- [General Ledger](#)
- [Payables Management](#)
- [Receivables Management](#)
- [Bank Reconciliation](#)
- [Multicurrency Management](#)
- [Analytical Accounting](#)
- [Electronic Banking](#)
- [Fixed Assets Management](#)
- [Encumbrance Management](#)

### General Ledger

#### **Clear balances of unit accounts during year-end close process**

You can mark the Clear Balance During Year-End Close option in the Unit Account Maintenance window to clear the balance for the unit account during the year-end close process. If this option is unmarked, the balance for the account is carried forward to the next year during the year-end close process.

#### **Keep inactive accounts with zero balances during the year-end close**

In the Year-End Closing window, you can specify how to handle inactive accounts with zero balances during the year-end close process. You have three options.

- Delete all inactive accounts with zero balances.
- Keep all inactive accounts with zero balances.
- Delete inactive accounts with zero balances that have no budget amounts and keep inactive accounts with zero balances that have budget amounts.

#### **View status during the year-end close**

After you choose the Close Year button in the Year-End Closing window, a status bar appears, displaying the steps that are completed during the year-end process.

#### **View net change and period balances for unit accounts at the same time**

You can use the Unit Account Maintenance window to view period balances and net change balances for the selected account at the same time.

#### **General Ledger batch approval information is stored**

You have the ability to track batch approval information for a General Ledger general journal batch in addition to the posting information that's kept. The approval user (APRVLUSERID) and date (APPRVLDT) are now stored in the Year-to-Date Transaction Open (GL20000) and Account Transaction History (GL30000)

tables. You can use Smart List Builder, Excel Builder or a Reporting Services report to add those new columns to a report or inquiry.

### **Reconcile subledgers to General Ledger**

You can use the Reconcile to GL window to generate a Microsoft Excel spreadsheet that can help you match transactions in General Ledger with the originating transactions in Payables Management, Receivables Management, Inventory and Bank Reconciliation. The reconcile routine will not change data automatically, but helps you identify those transactions which may need to be corrected.

### **Copy posted transactions**

You can copy analysis information assigned to posted transactions in General Ledger.

### **Copy journal entries**

You can copy journal entries from a Microsoft Excel spreadsheet and paste the entries in the Transaction Entry window. (Added in Microsoft Dynamics GP 2013 Service R2.)

### **Opening a closed fiscal year in General Ledger**

Use the Reverse Historical Year window to open the most recent historical year. For example, if you have closed the years 2015 and 2014, 2015 appears in the window as the most recent historical year.

We recommend that you make a backup of your company before reversing the historical year. After reversing the historical year, we recommend that you reconcile all open years, starting with the oldest open year first and make another backup of your company. (Added in Microsoft Dynamics GP 2013 Service R2.)

## **Payables Management**

### **Edit payables information**

You have the ability to change the remit to address ID on an existing payables transaction, which allows you to edit the payables transaction rather than voiding and reentering for one incorrectly entered or changed address.

You can also edit the 1099 setting for vendor records, allowing you to change an incorrect setting which automatically updates the invoices entered for the vendor.

### **Reprint remittance forms and check stubs**

You can reprint remittance forms and check stubs for posted check payments entered in the Payables Transaction Entry window and for computer checks. You must be keeping transaction history for any vendors that you will be re-creating these reports for. These re-created reports will contain all of the details from the original document as long as the original was printed, the payment isn't voided, or history isn't deleted. In those cases, the re-created report will not contain all of the original detail.

### **Information for voiding reconciled payments**

In Payables Management, a field has been added to the Void Historical Payables Transactions window and the Void Open Payables Transactions window that displays whether a payment has been reconciled in Bank Reconciliation. This field

is informational, we do not recommend voiding payments that have been reconciled with your checkbook, but you are not prohibited from doing so.

**Voiding check enhancements**

When you have credit memos or returns applied to an invoice, and want to void an payment that is applied to the same invoice, the credit memo or return is automatically unapplied from the invoice and can be reapplied as needed.

Additionally, when credit card payments are applied to an invoice, a separate invoice is created for the credit card vendor. When a credit card payment is voided, the associated credit card vendor invoice is voided as well.

**1096 statements**

You can use the Print 1099 window to print 1096 statements on 1096 forms.

**1099 address ID**

You can select a 1099 address ID in the Vendor Maintenance window for each 1099 vendor. The vendor address information assigned to the 1099 address ID is used when you print 1099 statements.

**1099 box numbers and fields added**

The following 1099 box numbers have been added to the 1099 tax types.

Tax type	1099 box number	Description
Dividend	10	Exempt Interest Dividends
	11	Specified Private Activity Bond Interest Dividends
	14	State Tax Withheld
Interest	13	State Tax Withheld
Miscellaneous	18	State Income

In addition to the 1099 box numbers, the following 1099 fields have been added to the 1099 Details window and the 1099 Details Inquiry window.

1099 Details window and 1099 Details Inquiry window	
Tax type	1099 field
Dividend	Foreign Country or U.S. Possession
	State Code
	State Identification No.
Interest	Foreign Country or U.S. Possession
	Tax Exempt Bond CUSIP No.
	State Code
Miscellaneous	State Identification No.
	Payer Made Direct Sales of \$5,000 or more etc.
	State/Payer's State No.

**Combine or modify vendor IDs**

You can combine a vendor ID (the source vendor ID) with another existing vendor ID (the destination vendor ID) using the Vendor Combiner and Modifier window. The source vendor ID is removed from the system after the combine process is finished. Work, open and history records are combined into the destination vendor ID.

You also can use the Vendor Combiner and Modifier window to change an existing vendor ID to a new vendor ID. You do not have to manually enter a new vendor ID and reenter all open invoices. When you modify vendor IDs, all work, open, and history records are updated.

If you want to combine or modify a large number of vendor IDs, you can import data without having to manually enter the information. For example, if you are want to change 1000 current vendor IDs to 1000 new vendor IDs one at a time, you can save time by importing a two-column spreadsheet. (Added in Microsoft Dynamics GP 2013 Service Pack 2.)

### **Default sort order for printing checks**

You can select the default sort order for printing checks in the Payables Management Setup window. You can sort the checks by payment number, vendor name, state and city, or ZIP code or other postal code. The selection appears as the default entry in the Print Payables Checks window. (Added in Microsoft Dynamics GP 2013 R2.)

## **Receivables Management**

### **Define labels for user defined fields in Customer Address Maintenance**

The user defined fields in Receivables Management can be used to track additional customer address information throughout the system. The labels for the user defined fields that appear in the Customer Address Maintenance window can now be defined so that users can know what information to track in those fields.

### **Apply unposted multicurrency cash receipts**

If you're using Multicurrency Management, you can apply unposted cash receipts to transactions in the same currency as the cash receipt.

### **View the checkbook ID in the Cash Receipts Inquiry Zoom window**

You can use the Cash Receipts Inquiry Zoom window to view the checkbook ID that a cash receipt was posted to. (Added in Microsoft Dynamics GP 2013 Service Pack 2.)

### **Select a range of documents when voiding payables documents**

When voiding payables documents, you can view all documents or a range of documents for a vendor ID in the Void Open Payables Transactions window and the Void Historical Payables Transactions window. After selecting a vendor ID, you can restrict the documents that appear in these windows by selecting a document number range or a document date range. (Added in Microsoft Dynamics GP 2013 Service Pack 2.)

### **Combine or modify customer IDs**

You can combine a customer ID (the source customer ID) with another existing customer ID (the destination customer ID) using the Customer Combiner and Modifier window. When you combine the customer IDs, the source customer ID is removed from the system. The summary records are recalculated to include the information of both customer IDs and are appended to the destination customer ID.

By using the Customer Combiner and Modifier window, you can change an existing customer ID to a new customer ID without having to manually enter a new customer ID and reenter all open invoices.

If you want to combine or modify customer IDs, you can import data without having to manually enter the information. For example, if you want to change 1000 current customer IDs to 1000 new customer IDs one at a time, you can save time by importing a two-column spreadsheet. (Added in Microsoft Dynamics GP 2013 Service Pack 2.)

## Bank Reconciliation

### Reconciling a bank statement with a checkbook

You can reconcile a checkbook that has no transaction, service charge, or income activity. When you choose the Reconcile button in the Select Bank Transactions window, a message appears, stating that there are no transactions selected to be reconciled for the checkbook. After choosing to continue with the reconcile process, the last reconciled balance and the last reconciled date are updated for the checkbook with the bank statement ending balance and the bank statement ending date. (Added in Microsoft Dynamics GP 2013 Service Pack 2.)

### Reprinting the Outstanding Transaction Report

The Outstanding Transaction Report now is included in the reports that can be reprinted using the Financial Posting Journals window. (Added in Microsoft Dynamics GP 2013 R2.)

## Multicurrency Management

### Average exchange rate calculation method for currency translation

An option for selecting the method for calculating the average exchange rate is added to the currency translation defaults. You can calculate the average exchange method using the exchange table, a rate average calculation or a rate days average calculation. The difference between the two average calculation methods is that the rate average is a straight average of all rates divided by the number of days. Rate days average uses the number of days a rate is effective as part of the calculation.

Rate Average = (sum of rates)/(number of rates) per period

Rate Days Average = [Sum (rates\*number of days)/(number of days in the month)]

## Analytical Accounting

### Integrate Analytical Accounting with Fixed Asset Management

For Fixed Asset Management transactions, you can create assignments and enter transaction dimension codes for the distribution accounts that are linked to an account class. You can save transactions with analysis information to a batch prior to posting the batch. You can view analysis information created for transactions in the Analytical Inquiry windows.

**Copy purchase orders**

You can copy analysis information assigned to purchase orders or purchase order line items.

**Copy sales transactions**

You can copy analysis information assigned to Sales Order Processing invoices or returns.

**Copy posted transactions**

You can copy analysis information assigned to posted transactions in General Ledger.

**Integrate Analytical Accounting with Sales Order Processing deposits and payments**

You can enter analytical accounting information for deposits and payments assigned to Sales Order Processing orders or back orders. (Added in Microsoft Dynamics GP 2013 Service Pack 2.)

**Analytical Accounting codes assigned customer finance charges**

If the finance charge account is linked to an Analytical Accounting code when you assess finance charges, default Analytical Accounting information is created. After assessing finance charges, you can review each finance charge transaction saved in the receivables batches, if you are posting transactions to General Ledger. The Analytical Accounting codes are assigned to each customer transaction. You can edit Analytical Accounting information for each customer finance charge before posting through General Ledger. (Added in Microsoft Dynamics GP 2013 SP2.)

**Default Analytical Accounting information for Payables Management manual payments**

When you apply a manual payment to an invoice that has analysis information, the default analysis information for the accounts payable account on a manual payment is from the invoice. (Added in Microsoft Dynamics GP 2013 R2.)

**Updates to the Analytical Accounting Setup Wizard window**

You can choose the Pre-activation Check button in the Analytical Accounting Setup Wizard window to determine if there are duplicate records in General Ledger or sub-ledgers that could prevent the Analytical Accounting activation. The Analytical Accounting Pre-activation Check – General Ledger Transactions report and the Analytical Accounting Pre-activation Check – Sub-Ledgers Transactions reports are printed if duplicate records are found. (Added in Microsoft Dynamics GP 2013 R2.)

The Analytical Accounting Setup Wizard window remains open after creating default records. (Added in Microsoft Dynamics GP 2013 R2.)

**Integrate Analytical Accounting with landed costs in Purchase Order Processing**

You can enter analytical accounting information for landed costs incurred in the process of purchasing an item. (Added in Microsoft Dynamics GP 2013 R2.)



## Copy or import default dimension for U.S. Payroll transactions

You can use the Analytical Payroll Default Dimensions window to copy or import existing Payroll default dimensions. (Added in Microsoft Dynamics GP 2013 R2.)

## Electronic Banking

### BAI2 bank format added to Electronic Reconcile

The Electronic Reconcile module is modified to support the *Cash Management Balance Reporting Specifications Version 2 (BAI2)* release from the Bank Administration Institute (BAI). Additional fields needed for the format have been added as well as default entries for those fields are provided.

### EFT field length

In Electronic Banking, you can choose whether you want to use a field delimiter to separate each field in an EFT flat file. Then, you can also specify the character you want to use for the field delimiter. In addition, you can choose an optional text qualifier for fields that map to a constant or data field. Text qualifiers will use two characters in your line length, for example, if your line length is set up 10, and you select single quote (') as your qualifier, and the data is nine characters in length, the qualifier will make your field length 11 characters, which is over the maximum length, so be sure to set your field length accordingly.

### EFT settlement date

You can specify a settlement date for EFT transmissions. The settlement date is the date the funds are to be transferred to the vendor, which is different than the transmission date, which is when the files are sent to the bank. For example, if you are generating the file on Friday, but won't be transmitting until Monday, you'll enter Monday's date in the Transmission Date. Often, the settlement occurs after the transmission, so you'd change the Settlement Date to Tuesday's date.

## Fixed Assets Management

### Historical depreciation amounts

By marking the Reset History in Detail option in the Fixed Assets Company Setup window, each depreciation transaction taken for an asset in closed years will have an offsetting transaction created. If the Reset History in Detail option is not marked, a summary transaction is created in the last period of the most recent closed year for all depreciation taken for the asset in closed years.

### Fixed Assets Depreciation Detail and Fixed Assets Depreciation Ledger reports

When printing the Fixed Assets Depreciation Detail report or the Fixed Assets Depreciation Ledger report, you can enter a cutoff date and have the depreciation amounts calculated through that date. For example, if you select End of Previous Month, the report includes depreciation transactions as of the last day of the previous month. This allows you to print the report using a defined historical date.

### Book Setup window update

After an asset for a book has been depreciated, you can't change the current fiscal year in the Book Setup window.

You can specify a calendar ID for the book. The calendar ID assigned to the book will be used for processing financial transactions such as retiring, depreciating, and transferring assets.

### **Depreciation Process Information window**

You can reverse depreciation for all assets or for a group of assets using the Depreciation Process Information window.

The Progress button was removed from the Depreciation Projection window and the Depreciation Process Information window and replaced with a progress bar.

### **Posting in detail to General Ledger**

General Ledger can be updated with Fixed Asset Management transactions in detail if you mark the Post in Detail option in the Fixed Assets Company Setup window. When a batch is posted from the Fixed Assets General Ledger Posting window, a General Ledger journal entry is created for each Fixed Assets Management transaction in the batch. For example, two Fixed Assets Management transactions are created when you depreciate all assets for a month and then retire several assets. When you post a batch from the Fixed Assets General Ledger Posting window for those two transactions, a General Ledger journal entry is created for each Fixed Assets Management transaction.

If the option is unmarked, all transactions are summarized into a single journal entry by account. When you post a batch from the Fixed Assets General Ledger Posting window, there will be one General Ledger distribution per account in the one journal entry.

### **Edit distributions before posting batch to General Ledger**

You can review or edit the account distributions for a batch of Fixed Asset transactions before creating the batch in General Ledger using the Fixed Assets General Ledger Posting window. If the batch information is incorrect, you can delete the batch in Fixed Assets Management.

### **Intercompany transfers**

You can use the Fixed Assets Intercompany Transfer window to transfer assets from one company (originating company) to a different company (destination company). You can transfer a single asset or a group of assets. Asset setup information is transferred with the assets to the destination company so you don't have to set up the assets in the destination company. During the transfer, the asset or asset group is automatically retired in the originating company. You can only transfer assets within the same instance of Microsoft Dynamics GP.

### **Automatically generating the next asset ID**

You can mark the Auto Generate Next Asset ID option in the Fixed Assets Company Setup window to automatically generate the next asset ID in the Asset General Information window. After marking the option, you can enter the next asset ID to use when adding a new asset. If you leave this field blank, you will have to enter the asset ID in the Asset General Information window when creating a new asset.

By automatically generating the next asset ID when transferring an asset to a destination company, you can avoid duplication issues with the existing asset IDs in the destination company. The next asset ID from the destination company's Fixed Assets Company Setup window is used to generate the new asset ID. If you are not creating a new asset ID for a destination company record, the existing asset ID for

the asset in the originating company is used for the asset general record in the destination company.

### **Default asset ID for each class**

You can define a default asset ID for each class. This allows you to enter a different ID prefix and numbering scheme for each class. This allows greater ease in adding asset records and enables users to better identify assets by class. (Added in Microsoft Dynamics GP 2013 R2.)

### **Fixed Assets Management calendars**

Use the Fixed Assets Calendar Setup window to create multiple calendars in Fixed Assets. When you create a calendar, you can base the calendar on the Fiscal Period Setup window, the calendar year, or an existing calendar year. For example, you can create a calendar for the corporate book that needs to depreciate assets according to the year set up in the Fiscal Period Setup window while the tax book needs a calendar to depreciate assets according to the calendar year.

You also can define whether the fiscal year is longer or shorter than a twelve period year and enter the percentage of a full year's depreciation that should be taken in that short or long year.

### **Integrate Analytical Accounting with Fixed Asset Management**

For Fixed Asset Management transactions, you can create assignments and enter transaction dimension codes for the distribution accounts that are linked to an account class. You can save transactions with analysis information to a batch prior to posting the batch. You can view analysis information created for transactions in the Analytical Inquiry windows.

## **Encumbrance Management**

### **Multiple budget selection for encumbrance**

You can select multiple budgets for each fiscal year, for example, if you have several departments each using separate budgets, but you want to validate them all.

### **Encumbrance integration with General Ledger**

You can validate account amounts entered in General Ledger. Only transactions with a General Entry origin will be validated. Once you choose to enable the integration in Encumbrance setup, you select the accounts you'll encumber. You'll receive a warning if the previously encumbered amounts, actual posted amounts and budget for the period is exceeded.

### **Encumbrance integration with purchase requisition**

You can validate account amounts entered for purchase requisitions. Once you choose to enable the integration while setting up Encumbrance, you select the accounts you'll encumber. When you create purchase requisitions, encumbrances are automatically created. They're authorized automatically if the requisition line items fit the budget requirements, and can be authorized manually if they're outside budget requirements. You'll receive a warning if the previously encumbered amounts, actual posted amounts and budget for the period is exceeded. (Added in Microsoft Dynamics GP 2013 R2.)

## Reporting

The Encumbrance Summary Inquiry Report and the Encumbrance Detail Inquiry Report are available as SQL Server Reporting Services reports. You can use the Report Assignments window to assign these SQL Server Reporting Services reports to print from the Encumbrance Summary Inquiry window or the Encumbrance Detail Inquiry window. After assigning reports, you can use the Printer icon drop-down list to select a report you want to print from a list of reports. (Added in Microsoft Dynamics GP 2013 R2.)

## Chapter 3: Distribution enhancements

This part of the documentation describes enhancements to distribution modules. The following modules are discussed:

- [\*Inventory Control\*](#)
- [\*Purchase Order Processing\*](#)
- [\*Sales Order Processing\*](#)

### Inventory Control

#### Select multiple serial numbers at one time

You can select multiple serial numbers by holding the Shift key while choosing numbers in any window where serial numbers are selected, rather than one number at a time. The Insert button will move all the selected numbers from the Available list to the Selected list.

#### Change standard cost for periodic valuation items

In order to keep standard cost for periodic valuation items balanced, a utility to change item standard cost has been added. When you change the standard cost using this utility, an adjusting transaction is created and posted. You can see the results in the new Standard Cost Posting Journal. A new posting account is added for tracking the standard cost revaluation.

If you are using the Manufacturing module, use the windows in that module to change the standard cost.

#### Inactivate items

Inventory items can be inactivated in order to prevent the sale, purchase or processing of an item. Inactivating allows you to maintain history for your inventory items while those items are not in use. Certain restrictions apply to inactivating, such as items on an active kit or bill of materials cannot be inactivated.

#### Inactivate site and item-site relationships

If a site is no longer used, you can inactivate a site in order to prevent it from being entered on any new transactions. However, existing transactions can be posted so that your inventory on hand can be reduced. This will keep the site in your system until you're ready to delete it. You will also be able to exclude inactive sites on the Site List report.

You also can inactivate an item-site relationship. This is useful if you no longer stock an item at a particular site. If you inactivate the item-site relationship, no new transactions for that item-site combination can be entered, but existing transactions can be posted. Inactivating the item-site relationship does not affect the site ID or the item at other sites.

#### Reason codes

Reason codes are added throughout Inventory Management for tracking inventory movement. You can set up reason codes that can be entered on Inventory transactions to provide a log of what is occurring in your warehouses as well as identify trends that can provide insight into daily operations.

**Bin transfer history**

A document number is added to Inventory Management for tracking Bin Transfer transactions if you are using multiple bins. You can also view item bin transfers in a new inquiry window. This allows better tracking of those transactions, and also allows you to remove history specific to bin transfers.

**Select multiple serial numbers at one time**

You can select multiple serial numbers by holding the Shift or CTRL key while choosing numbers in any window where serial numbers are selected, rather than one number at a time. The Insert button will move all the selected numbers from the Available list to the Selected list.

**Assign suggested sales items to an item**

You can use the Suggest Sales Item Maintenance window to specify default suggested line items to sell with an item when entering a Sales Order Processing invoice, quote, order, or fulfillment order. You can select up to five suggested line items.

You also can enter a script or talking points to suggest other items that could be purchased with the item. The script you enter here displays in the Suggest Sales Item Entry window. (Added in Microsoft Dynamics GP 2013 R2.)

**Updates to the Suggest Sales Item Entry window**

The following fields were added to the Suggest Sales Item Entry window.

Field	Description
Quantity	Displays the quantity quoted, quantity ordered, quantity to deliver, or invoice quantity for the item in the Sales Transaction Entry window.
Unit Price	Displays the price for the item in the specified unit of measure.
Quantity Available	Displays the item quantity available in inventory at the site and in the unit of measure displayed.
Quantity to Add	The default quantity to add is the Quantity field times the Suggested Quantity field for each item. You can change the quantity to add.  This quantity to add updates the quantity quoted, quantity ordered, quantity to deliver, or invoice quantity for the suggested item in the Sales Transaction Entry window.
Sales Script	Displays the script entered for the suggested sales item.

(Added in Microsoft Dynamics GP 2013 R2.)

**Analyze suggested sales items**

You can use the Suggested Sales Item Analysis window to analyze a suggested item to see if other items should be sold as companion items with the suggested item. (Added in Microsoft Dynamics GP 2013 R2.)

**Assign multiple sites to an item**

You can use the Site Item Assignments window to assign a range of sites to an item. You also can select a primary vendor, landed cost group ID, and the item print option for each site you want to assign to the item. (Added in Microsoft Dynamics GP 2013 R2.)

## Purchase Order Processing

### Receive a message when purchase order line item is not fully invoiced

You can select a setup option to receive a warning message that a line item has a remaining quantity to invoice when closing a purchase order or a purchase order line item in the Edit Purchase Order Status window.

You can require a password to be entered if you want to limit the users who can close purchase orders and purchase order line items when there is a remaining quantity to invoice.

### Track serial and lot numbers for drop-ship purchase orders

You can enter serial numbers and lot numbers when invoicing a drop-ship purchase order or drop-ship blanket purchase order.

### Quantity tolerances

You can specify quantity tolerances for shortages and overages for the quantity ordered when receiving against a standard purchase order or a blanket purchase order. Quantity tolerances are not calculated for purchase orders created from Sales Order Processing documents.

For inventoried items with an item type of Sales Inventory or Discontinued, you can set up a quantity tolerance for shortages and overages using the Item Purchasing Options Maintenance window. For non-inventoried items, you can set up a quantity tolerance overage and shortage using the Purchase Order Processing Setup window.

### Prepayments for purchase orders

If a vendor requires a prepayment for a purchase, you can enter a prepayment amount if you have marked the Allow Purchase Order Prepayments option in the Purchase Order Processing Setup window. By marking this option, you can enter a prepayment amount for a purchase order and generate the prepayment as computer check in Payables Management. If you want to enter manual prepayments, you must mark Create manual prepayment from Purchase Order Processing.

### Copy purchase orders

If you are using Analytical Accounting, you can copy analysis information assigned to purchase orders or purchase order line items.

### Purchase order approval workflow

If your company uses the Workflow feature among its business controls, purchase orders might have to be approved before receiving or invoicing items. The rules for approving purchase orders can be defined to fit your organization's needs. Multiple approvers might be required, or approval might not be required for purchase orders with certain buyers or small currency amounts. When a purchase order is ready to be approved, approvers can be notified and the purchase orders can be approved, using Microsoft Office Outlook and Microsoft Dynamics GP. After a purchase order is approved, it can be printed, received, or invoiced against. For more information about Workflow, see the System Setup Guide (Help >> Printable Manuals >> select System >> select System Setup Guide).

### **Purchase requisitions**

You can use the Purchase Requisition Entry window to enter, edit, save, and submit requisitions. Requisitions can have with any type of good, either inventoried or non-inventoried items. You can enter data that doesn't exist, then the purchaser can edit or resolve any of these differences. Finally, the requisitions can be purchased in bulk, combining multiple requisitions into a single purchase order.

You can use the Procurement area in your Home Page to view summary information, quick navigation to common tasks, and viewing the most recent activity for purchase requisitions. The information that displays in this area will only be for the purchase requisitions that the user has entered. Depending on the link you clicked, a window or a navigation list opens.

If you are using workflow, you can create your business process for how a requisition is routed, set required fields, route to managers, or route to budget approvers. (Added in Microsoft Dynamics GP 2013 R2.)

## **Sales Order Processing**

### **Print back ordered items on picking tickets**

You can use the Print Sales Documents window, the Sales Document Print Options window, and the Bulk Picking Print window to print back-ordered items on picking tickets.

### **Combine multiple fulfillment orders into one invoice**

If you're using sales fulfillment workflow, you can combine multiple fulfillment orders for the same customer onto a single invoice, simplifying the invoice for your customer. All the fulfillment orders must be at the same status in the workflow and contain the same bill to address, currency information, payment terms and commission details. Additionally, you can process fulfillment orders for a number of different customers at once, each creating a separate invoice. The new invoices and their corresponding fulfillment orders are given a new master number in order to link them together.

### **Copy sales transactions**

If you are using Analytical Accounting, you can copy analysis information assigned to invoices or returns

### **Ship to address enhancements**

An Address Name is added to the sales ship to address entry windows which can be printed on sales documents. This is helpful in situations when the name of the receiver of goods doesn't match the name of the person ordering, for example, if goods are shipped directly to a vendor. An option for printing a phone or fax number on the sales documents is also added.

An option for combining drop ship sales items onto purchase orders is also added. You can create one purchase order from one multiple-line sales order that contains different ship-to addresses, which is useful when you have a sales order for one company that is drop-shipped to multiple locations. Or, you can create one purchase order from multiple sales orders when you drop ship to multiple shipping addresses. This is useful if you have several sales orders and you're drip shipping the same item to multiple locations and only one purchase order is necessary to purchase the correct quantity of the items.



**Add suggested items**

If an item has suggested sales items assigned to it when entering an invoice, quote, order, or fulfillment order, you can use the Suggest Sales Item Entry window to mark the suggested sales items to add to the document. You also can enter the suggested quantity and the site ID for each suggested sales item.



# Chapter 4: Human Resources and Payroll enhancements

This part of the documentation describes enhancements to Microsoft Dynamics GP Human Resources and U.S. Payroll.

The following information is discussed:

- [Human Resources](#)
- [U.S. Payroll](#)
- [Human Resources and Payroll Suite](#)
- [Advanced Human Resources](#)
- [U.S. Payroll Extensions](#)
- [PTO Manager](#)

## Human Resources

### Life insurance premium age based on birthday or end of year

If you use age based life insurance benefits, you can select to base the premium methods on employee's age on their birthdays or age at the end of the year.

### Email address for applicants

You can enter an email address for an applicant using the Applicant window. The email address is not transferred to the new employee record that is created when an applicant is hired. (Added in Microsoft Dynamics GP 2013 Service Pack 2.)

## U.S. Payroll

### Default print option

You can select a default option for printing alignment forms or checks/earning statements. If aligning your checks isn't necessary for each pay run, select Checks/Earning Statements in the Payroll Setup window, when you print, the checks or earning statements will be printed. You can always change the option at printing time to print the alignment form, if you choose checks/earning statements as a default.

### Warning for duplicate checks

During the print checks or print earnings statements process, a warning will appear if a duplicate check number is found for the selected checkbook, if duplicate check numbers are not allowed for the checkbook. You can choose to proceed with the duplicate check or stop the processing. If you stop processing a Payroll Duplicate Check Report will be printed which displays the duplicate check number and table in which it's found.

The option to allow duplicate check numbers is found in the Checkbook Maintenance window (Financial >> Cards >> Checkbook).

### New Build Check File Exception Report

A new Build Check File Exception Report will print after the Build Check File Report is printed during the build check process. The Build Check File Exception Report displays only the warnings and critical messages that occur during the build

providing a quick look at any exceptions that occur, rather than finding the errors in the longer Build Check File Report. The Build Check File Report is not changed.

### **Edit Pay Code History information**

Employee pay code entries for Workers Compensation, SUTA and FUTA can be edited in the Employee Pay Code History window as long as the Edit Financial Fields option is marked in the Payroll Setup Options window. When a code entry is changed, the employee pay code history is updated to reflect the change.

### **FICA Tax Sheltered Annuity changes**

The TSA Sheltered from FICA Tax option has been changed to two separate options; FICA Social Security and FICA Medicare to allow each deduction to be exempt separately. In the Deduction Setup and the Employee Deduction Maintenance windows, the two check boxes replace the one Sheltered from FICA Tax check box. If, prior to upgrading to Microsoft Dynamics GP 2013, the TSA Sheltered from FICA Tax check box was marked, the two new check boxes will be marked during the upgrade. Likewise, if it was previously unmarked, the two will be unmarked during the upgrade. If you have history for the employee record, you won't be able to later change the entries set during the upgrade.

This change will not affect deduction sequences or computer check processing. Depending on the selection in the TSA Sheltered from option prior to upgrading, the system will process the deductions in the same manner as it did for FICA Tax.

### **Modify pay, benefit and deduction codes**

Circumstances may arise in which you need to change the code used for pay codes, benefit codes and deduction codes. A utility is added for modifying the code used either on a single code basis or using a batch to import a text file containing code changes. This is useful if, for example, your company is changing from a vacation to a paid time off code, or if you're using codes from a legacy system in which numbers are used and you want to use a code that is more self-explanatory.

If there are additional products installed, all 3rd party tables should be tested for validation.

### **Sort checks by check date in inquiry windows**

After entering a check date range in the Payroll Check Inquiry window or the Payroll Transaction Inquiry window, you can use the Sort By option to select the order in which checks appear in the scrolling window. You can select Descending as a sorting option to display the most recent check date first or select Ascending to display the oldest check date first. (Added in Microsoft Dynamics GP 2013 Service Pack 2.)

### **Payroll timecards**

Employees and managers can enter timecards in Payroll. Managers can enter time on behalf of their employees as well as behalf of others. When you enter a time card, you can enter a start and stop time in A.M./P.M. formats. Employees also can view their own timecard information such as vacation time. Timecards can be saved as a template for future use. (Added in Microsoft Dynamics GP 2013 R2)

You can use the Time Management area in your Home Page to view summary information, quick navigation to common tasks, and viewing the most recent activity for timecards. The information that displays in this area will only be for the timecards that the user has entered. Depending on the link you clicked, a window or a navigation list opens. The current workweek displays saved, not submitted, timecard information. (Added in Microsoft Dynamics GP 2013 R2)

Your company must be using the Workflow feature to approve timecards before employees can be paid. The rules for approving timecards can be defined to fit your organization's needs. When a timecard is ready to be approved, approvers can be notified and the timecards can be approved, using Microsoft Office Outlook and Microsoft Dynamics GP. For more information about Workflow, see the System Setup Guide (Help >> Printable Manuals >> select System >> select System Setup Guide).

## Human Resources and Payroll Suite

### Unified communications implemented

An office presence indicator is added to Human Resources and Payroll Suite windows containing employee and manager IDs, matching functionality elsewhere in Microsoft Dynamics GP.

## Advanced Human Resources

This module is part of the Human Resources and Payroll Suite, which can be installed as an additional product. New features include the following:

### Advanced Warning Notice

The Required Certification/License/Training Inquiry report when printed using Excel includes email addresses for the employee and supervisor so that you can send notifications when certain certificates, licenses or training credentials are due to be renewed.

### Delete History Records

A setup option is added to provide the ability to delete certification, license and training history and use password protection to do so. You can delete individual certifications, license and training history records from the Certification History, License History and Training History windows.

### Editable labels for user defined fields added to CLTM functionality

You can set up labels for four user-defined fields for certifications and licenses for tracking additional information not provided by the system. The labels you set will appear as fields in the Certification Entry and License Entry windows.

## U.S. Payroll Extensions

This collection of features for U.S. Payroll is part of the Human Resources and Payroll Suite, which can be installed as an additional product. New features include the following:

### **Mandatory Arrears Templates with Reminders**

Templates for calculating and posting mandatory arrears are provided which help make the calculation process easier and more automated. You can set up mandatory arrears reminder tasks and which user security task receives the reminder. This template information will be printed on mandatory arrears reports. Additionally, batch posting is available for posting multiple sets of arrears at once.

### **Deduction in Arrears Report settings**

You can specify settings for the Deductions in Arrears Report in the Posting Setup window.

### **PIP Voucher Consolidation**

A setup option is added for summarizing vouchers for federal tax. You can consolidate PIP vouchers during payroll processing on an employee basis into one voucher. The amounts are calculated by summing each of the following amounts:

- FICA SS (employee)
- FICA SS (employer)
- FICA Med (Employee)
- FICA Med (employer)
- Federal Tax

### **Payables integration voucher options**

If you're using the Payables integration with Payroll extensions you can remove leading zeros on voucher document numbers for individual vendors using an option in the HRP Suite Options window. An option to summarize vouchers for federal tax on a per-employee basis is also added.

### **Use custom voucher descriptions**

You can create custom voucher descriptions to better identify the information on the voucher, if you're using the Payables integration with Payroll. When setting up payroll vendors, depending on the transaction type, different variables can be assigned to the type, such as court case number or last four digits of the employee social security number. The information for those variables will appear on the voucher description.

## **PTO Manager**

This module is part of the Human Resources and Payroll Suite, which can be installed as an additional product. New features include the following:

### **Update HR Vacation Calendar with PTO information**

During payroll processing, you can select to update the vacation calendar with PTO information. This will capture the date and code used for PTO processing for employees, create an absence record in the Absence Entry window with the Employee ID, Start Date, End Date and comment, and use that information to create a vacation calendar entry.

### **Manual checks update PTO**

When processing a manual check for an employee that contains pay codes which impact hours worked, the system will update the vacation and sick fields in the Life-To-Date Hours Worked section of the Employee PTO Maintenance window.

**Negative carryover**

Negative balances for vacation and sick time can be carried over. Any adjustments, accruals and taken amounts are processed and combined on the new balance for the ensuing period.

**PTO detail and history**

Several enhancements have been made to allow greater PTO detail and reporting:

- View detailed PTO adjustment data in a new PTO Detail Inquiry window
- Print the detailed PTO adjustment transaction history for an employee
- Generate a PTO adjustment transaction for each employee during payroll processing
- Create a negative adjustment for vacation or sick transactions
- Display PTO detail records by year with additional range criteria
- Generate a detailed beginning balance transaction for PTO default when processing the year end PTO utilities.

**PTO Exception Report**

An employee PTO exception report can be printed for the most recent year that contains a PTO transaction detail record. That year's transactions are included in the calculations. Any employee that has a current balance for either sick time or vacation time that is not equal to the transaction balance will be included on the report.





## Chapter 5: Field Service Series enhancements

This part of the documentation describes enhancements to the Field Service Series. The following topics are discussed:

- [\*Service Call Management\*](#)
- [\*Contract Administration\*](#)
- [\*Returns Management\*](#)

### Service Call Management

#### **Update back ordered item quantity from service calls and work orders**

The back ordered quantity in the Item Inquiry and Item Quantities Maintenance windows will be updated by any quantity back ordered on a service call or depot work order, giving you a truer representation of your inventory quantities.

#### **Update Item Allocation Inquiry from Field Service Series modules**

You can view item quantities allocated from Field Service series documents from the Item Allocation Inquiry window. From the Item Inquiry window, use the zoom on the Allocated field to open the Item Allocation Inquiry window, where Field Service now appears in the Module Restrictions box. You can also use the Document Number field zoom to open the Field Service series inquiry window displaying the original document.

#### **Shipping address overrides remain throughout the service call process**

When you override the shipping address on a part line with a miscellaneous address ID, that shipping address is used throughout the service call process for that part. A tax schedule ID is added to the Misc. Address Maintenance window, so that when that shipping address override is used on the part, the tax schedule assigned to the address is used to calculate the tax on the invoice in Sales Order Processing.

#### **Super session date history is maintained**

When entering equipment supersessions, the date is added to the supersession history key in order to record and recall all changes to the supersession, including those made on the same day.

#### **Hotline notes are resorted newest first**

Notes entered Hotline Entry window are displayed in the Call Number Note window newest first, so that you always have the most recently entered information at the top of the window. Any additional notes you enter in the Note window will remain where you entered them, instead of sorting to the top of the window.

#### **Sale of discontinued items can be more restrictive**

When a discontinued part is entered on a service call or depot work order, and the quantity available is less than the quantity entered, a window will appear showing

you the quantities available so that you are able to make a decision such as changing the quantity entered or substituting the item.

<b>Allow sale of discontinued item setting</b>	<b>Password required?</b>	<b>Results</b>
Unmarked (not allowing sales)	Passwords can't be set up if not allowing the sale	No discontinued items can be entered on a service call or depot parts posting. Additionally, no kit items can be entered if they have been discontinued.
Marked	Required	When a discontinued item is entered, you will immediately receive the password entry window. Once the password is entered, if the quantity entered is larger than the quantity available, the new Discontinued Item Quantity Available window opens, and you can view the available quantity at the tech site and at the restocking site. The quantity on the line will be changed to the quantity available. You won't be able to change it to a quantity larger than what's available. If the quantity entered is less than the quantity available, you can continue with the order with no further interruption.
Marked	Not Required	If the quantity entered is larger than the quantity available, the new Discontinued Item Quantity Available window opens, and you can view the available quantity at the tech site and at the restocking site. The quantity on the line will be changed to the quantity available. You won't be able to change it to a quantity larger than what's available. If the quantity entered is less than the quantity available, you can continue with the order with no further interruption.

**Create equipment cards from Manufacturing orders**

You can automatically create equipment records from Manufacturing order receivings and from Manufacturing Quick Orders. You can also decide whether you want to create equipment records from non-serialized items on manufacturing orders as well.

**Contract Administration**

**Locate unposted revenue for a single contract**

A Contract Number field is added to the Contract Revenue Recognition window. You can select a contract and view only the unposted revenue entries for that contract for all periods up to and including the fiscal year and period selected. You can then post the revenue for the single contract.

**Consolidate revenue recognition into a single General Ledger entry**

The contract revenue recognition process creates a General Ledger batch named LIABI which contains the account information from all marked contracts to be posted. This batch will contain one journal entry consolidating the account information by fiscal period and year, and you will be able to see the account detail for each contract line.

**Contract lines can be moved for open service calls**

You can move contract lines even if the line is on an open service call. Any open lines are updated with new contract parts, labor and miscellaneous percentages and extended prices are recalculated. In addition, if the contract move changes the Customer ID or Address ID, that information will be updated on the service call.

**Returns Management****Multiple user editing allowed**

Two or more users can edit the same RMA; however, they cannot edit the same line on the RMA. If one user is editing a line, the subsequent users attempting to edit the line will receive a message that the line is being edited. Additional lines can be added by inserting a new row when another user is editing the last empty row on an RMA.

**Item descriptions appear on Sales Order Processing returns**

Item descriptions entered on RMA credit will be displayed on resulting Sales Order Processing returns when the RMA receiving is complete. Each line on the Sales Order Processing Return displays the original item description, rather than an automatically generated description.

**Return quantities to any quantity type**

You can return quantities to other inventory quantity types to more accurately account for the return. For example, if a return is because of a damaged product, you'll be able to return the item to the Damaged quantity type instead of the always returning to On Hand. You can set up a default quantity type for returns, which then can be changed during the RMA entry.

**Consolidate multiple RMA cross-ship lines to a single Sales Order Processing order**

You can optionally consolidate multiple cross shipped lines on an RMA onto a single Sales Order Processing order document. As long as the SOP order is open, any additional lines cross shipped for that same RMA will be added to the same sales order.



## Chapter 6: Project Accounting enhancements

This part of the documentation describes enhancements to Project Accounting. The following topics are discussed:

- [\*Project timesheet\*](#)

### Project timesheet

An employee can enter time for a single week, or multiple weeks within a reporting period that can be saved on a single document. Timesheets can be saved as a template for future use. (Added in Microsoft Dynamics GP 2010 R2)

Your company must be using the Workflow feature to approve Project timesheets before the timesheets can be sent to payroll for processing. The rules for approving timesheets can be defined to fit your organization's needs. When a timesheet is ready to be approved, approvers can be notified and the timesheet can be approved, using Microsoft Office Outlook and Microsoft Dynamics GP. For more information about Workflow, see the System Setup Guide (Help >> Printable Manuals >> select System >> select System Setup Guide).

